

**Hydraulic Pressure Transducer – 2000 bar**

Basic device of the high-pressure hydraulics, for all applications where large forces at small working speeds or component deformations or stress states shall be obtained at very high pressure by large pressure loads.

Rated pressure	2000 bar
Rated pressure intensifying ratio	16
Rated output flow rate	1 dm <sup>3</sup> /min
High pressure range	800–2000 bar

**Constructions:**

- Pressure transducer, basic construction for high-pressure pipe connection or with high-pressure actuator connecting piece
- Pressure transducer with high-pressure unloading valve for the filling and draining of a high-pressure volume or for the operation of a high-pressure cylinder

**Particularities:**

- Hydraulic pressure intensifier with integrated reversing valve
- Automatic start at any stroke position without additional external reversing equipment
- Position of use as desired
- Weight 1.5 to 1.8 kg dependent on the construction

**Hydraulic Hand Press for the Connection of Concrete Steels 16 to 28 Dia**

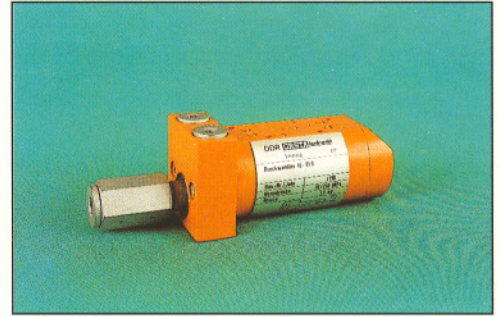
Device system consisting of:

- **Hand Press** inclusive of dies
 

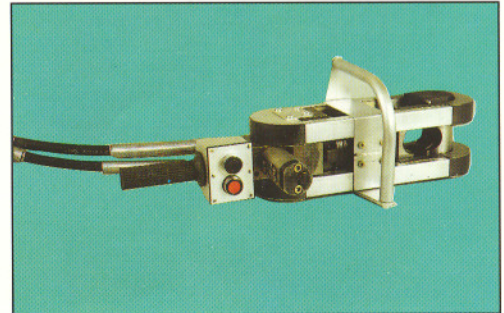
Press stroke	28 mm
Squeezing force	800 kN
Pressure	2000 bar
Weight	23 kg
- **Hydraulic Unit**

Pressure output	130 bar
Oil-flow	7 dm <sup>3</sup> /min
Connected load	2.2 kW
Weight	95 kg

1



1





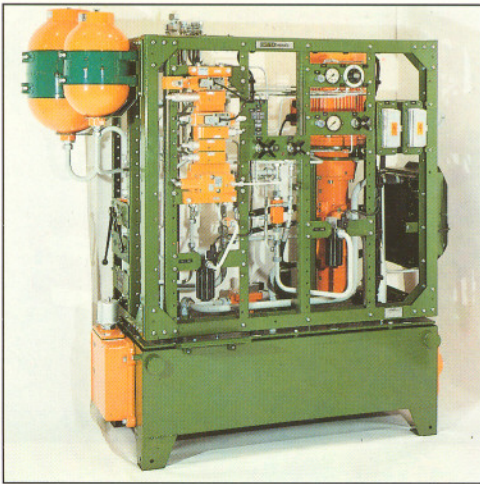


## Power Units

Operating pressure 29 to 200 bar  
(dependent on the rated power of the electric motor)  
Flow rate 1.2 to 44 dm<sup>3</sup>/min  
(dependent on the size of the gear pump)

- with gear pump combination, single-flow, in reservoir of 6.3 to 160 dm<sup>3</sup> of rated capacity
- Control block of size 6 or 10 with pressure relief valve, mounting surface for the mounting of ganged sub-plates
- Control functions offered are realised by valve linkings
- Additional subassembly: hydraulic accumulators in the sizes 1 to 25 dm<sup>3</sup>; with float switch and oil drain cock for reservoirs from 25 dm<sup>3</sup> on
- Application of proportional directional control valves of sizes 6 and 10 (with precedence with compact electronics)

5



## Hydraulic Power Packs for Stationary Application

Ready-to-mount hydraulic drives and controls for machines and plants for open and closed circuit

### Offer of Performances

- Consultation, project preparation, design and manufacture
- Individual, prototype and series production
- Commissioning

### Design and Constructions

- **Hydraulic Power Pack, Open Construction**  
Reservoir with built-up pump combination, control, operating and monitoring units
- **Hydraulic Power Pack, Framework**  
Open hydraulic power pack, control, operating and monitoring units arranged to sectional frame placed upon
- **Hydraulic Power Pack, Optimum Silence in Operation**  
Encapsulated pump combination below the reservoir, mounting to sectional frame placed upon
- **Hydraulic Power Pack, Closed Construction**  
Arranged on reservoir, lined, control, operating and monitoring units accessible from outside
- **Panel**  
Control, operating and monitoring unit rack in open construction, without reservoir and pump combination
- **Hydraulic Power Pack, Special Construction**  
Design adapted to the space conditions of the machines

We work both according to the project and the functional circuit diagram of the customer.

1/2/3/5/13

## Hydraulic Compact Power Packs

Operating pressure up to 160 bar  
(dependent on electric motor output)  
Flow rate up to 25 dm<sup>3</sup>/min

- Gear pumps, single-flow
- Various control functions

2

## Sealing Pressure Units

For centrifugal pumps  
with double-acting face seals

2



**Complete Hydraulic Drives and Controls Inclusive of Project Work Design, Production, On-Site Assembly and Commissioning for**

- Shipbuilding
- Power generation (power stations, upgrading of coal, transport systems)
- Supply and distribution of water and hydraulic steel structures (water works, sluices, suspension ferries)
- Investment objects (chemical processing plants, cultural buildings)
- Steel and rolling mill equipment, industrial plants, conveyance plants
- Presses, injection moulding machines
- Machine tools, foundry equipment
- Construction industry and building material industry, light industry
- Garbage dressing and destruction, recycling systems
- Rationalisation projects

1/2/5

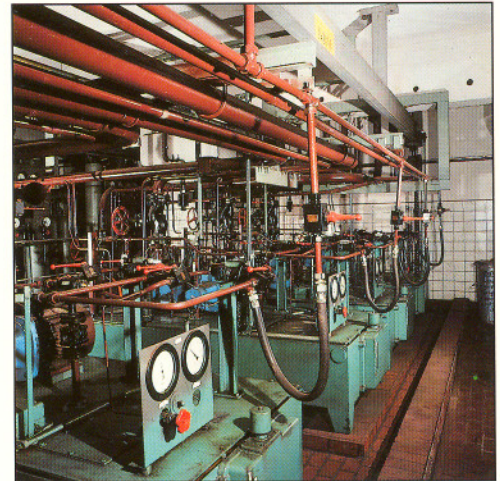
**System Solutions for Mobile and Stationary Systems**

Project work of hydraulic systems (open and closed circuits), the design and manufacture of which are realised by the customer.

**Performance Offer**

- Consultation and preparation of circuit diagrams as well as selection components
- Complete offers inclusive of hydraulic control elements, gearing and mounting variants
- Design and procurement of special performances (user-related components)
- Commissioning and preliminary work for the system documentation

3

**Development, Design and Production of**

- Hydraulic and pneumatic test rigs
- Hydraulic-pneumatic and electrohydraulic-pneumatic control and power circuits as well as special hydraulics
- Special machines, e.g. for workpiece-specific washing processes and mechanical deburring processes

13

**Service for mobile and stationary hydraulics****Reservoirs (10 892)**

for hydraulic systems for the building-up of hydraulic elements

Nominal capacities 25, 40, 63, 100, 160, 250, 400, 630, 1000 dm<sup>3</sup>

**Constructions**

- Normal or enlarged suction space
- Heavy or light cover plate
- With temperature and level indication as well as magnetic filter
- Optional with float switch
- From 160 dm<sup>3</sup> on with second cleaning opening

5

**Lining (mountable on reservoir 10 892)**

Bolted and welded construction

Base surface according to reservoir 10 892

Height 600, 850, 1100, 1350 mm

- Vent holes in the back wall
- Removable side wall and top part

**Reservoir DIN 24 339**

2/5

Nominal sizes = nominal capacity 63 to 1250 dm<sup>3</sup>

Normal and special steel construction

**Linings**

2/5

Mountable on reservoir DIN 24 339, splash-proof





### Gas-Loaded Bladder Type Accumulators

Nominal size	1/32	2.5/20	2.5/16	6.3/16	10/16	25/16
Maximum operating pressure, bar	320	210	160	160	160	160
Capacity of accumulator, l	1	2.5	2.5	6.3	10	25

- Nominal size 25/16 also with subsequently added gas bottle of 40 dm<sup>3</sup> contents

### Filling Equipment for Hydraulic Accumulators

Nominal size = indicating range of the pressure gauge	16; 60; 160 bar
---	-----------------

### Hydraulic Accumulator for Fuels

Maximum operating pressure	20 bar
Capacity of accumulator	6.3; 25 l

### Hydraulic Accumulator (piston type) HRN 38 193

Rated pressure	220 bar
Nominal size $\hat{=}$ capacity of accumulator	6.3; 10; 16; 25; 40; 63 und 100 l
Piston-dia.	180 and 250 mm

- Gas loaded with piston, with and without limit switching
- Energy store at intermittent operation or at discontinuous taking of fluid under pressure
- Energy reserve at emergency actuation
- Spring element for the pulsation damping
- Use in machine building, industrial plant construction and construction of vehicles



### Return Filters (21 541)

Rated pressure	
for line mounting	25 bar
for mounting on reservoir	10 bar
Nominal sizes	
for line mounting	20, 25 mm
for mounting on reservoir	20, 25, 32, 40 mm
Nominal filter rating	10, 16, 25, 63 $\mu$ m
- Clogging indicators	without
	mechanical
	mechanical-electric
	electric
- Magnet prefiltration	with or without



### Filter Units for the Maintenance of Hydraulic Systems (HSS 0065)

Rated pressure	6.3 bar
Nominal size = rated flow	
• mobile design	16 dm <sup>3</sup> /min
• compact design	63 dm <sup>3</sup> /min
Nominal filter ratings	
• mobile design	10, 16, 25 $\mu$ m
• compact design	6 and 10 $\mu$ m
- Suitable for the tanking up, refilling, intermediate cleaning, drainage and scavenging of complete hydraulic systems as well as for the single rinsing of hydraulic devices, lines, reservoirs and packings	

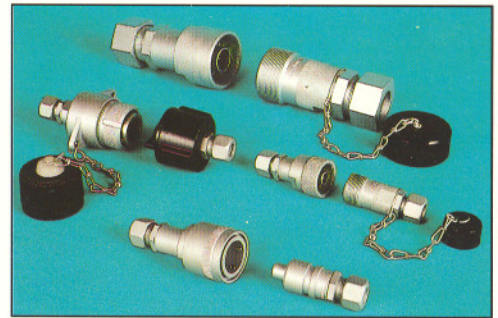


**Quick-Release Couplings**

Rated pressure	160 bar
Nominal sizes	4/6; 8/10; 13/16; 20/25 mm
Flow rate	10, 63, 100, 250 dm <sup>3</sup> /min

- for screwing (capable of being coupled and uncoupled without or with tool at pressure applied in both the lines)
- for plugging (capable of being coupled without tool only in pressureless state or coupled with tool at pressure in both the lines)

1


**Pressure Switch**

Rated pressure	320 bar
Range of adjustment of the switching pressure	1 to 16 bar; 10 to 100 bar 40 to 320 bar

- Applicable in hydraulic systems as electric signalling device
- Construction: one-point and two-point switch
- Cartridge type
- With linking unit also for line mounting
- With and without internal drainage
- One-point switch with plug connector, except heavy-duty construction

1


**Shut-Off Valves, Manually Controlled**

Rated pressure	160 and 320 bar
Sizes	6; 8; 10; 13; 20; 32 mm (size 32 only 160 bar)

- For line mounting

10


**De-Aerating Valves, Manually Controlled, HYS 19/01**

Rated pressure	320 bar
Size	15 and 28

- For line mounting
- Suited also for breathing

10

**Solenoid for Hydraulic Valves**

Rated pressure	
- G and Z	320 bar
- W	160 bar
Nominal sizes	35, 45, 60
Constructions	
- Direct voltage (G)	12, 24, 48, 60, 110, 220 V
- Alternating voltage (W)	110 and 220 V
- Alternating voltage with rectifier (Z)	110, 220 V

16

**Solenoids for Proportional Valves**

Rated pressure	320 bar
Sizes	45, 60
Constructions of 1st generation	P 45-0, P 60-0 without position sensor P 45-W, P 60-W with position sensor
2nd generation	P 49.2-0, P 60.2-0 without position sensor P 45.2-W, P 60.2-W with position sensor

16